

Plans and elevations shown are conceptual. Room sizes and or dimensions shown are approximate. Reference construction drawings for specific details. Consistently improving our product, Waterford Homes reserves the right of prices, plan, and specification changes without prior notice or obligation. Designs depicted on this hand-out are the property of Waterford Homes and may not be used or reproduced without permission.

COPYRIGHT © 2014 WATERFORD HOMES, INC.



Front Elev.



WATERFORD HOMES

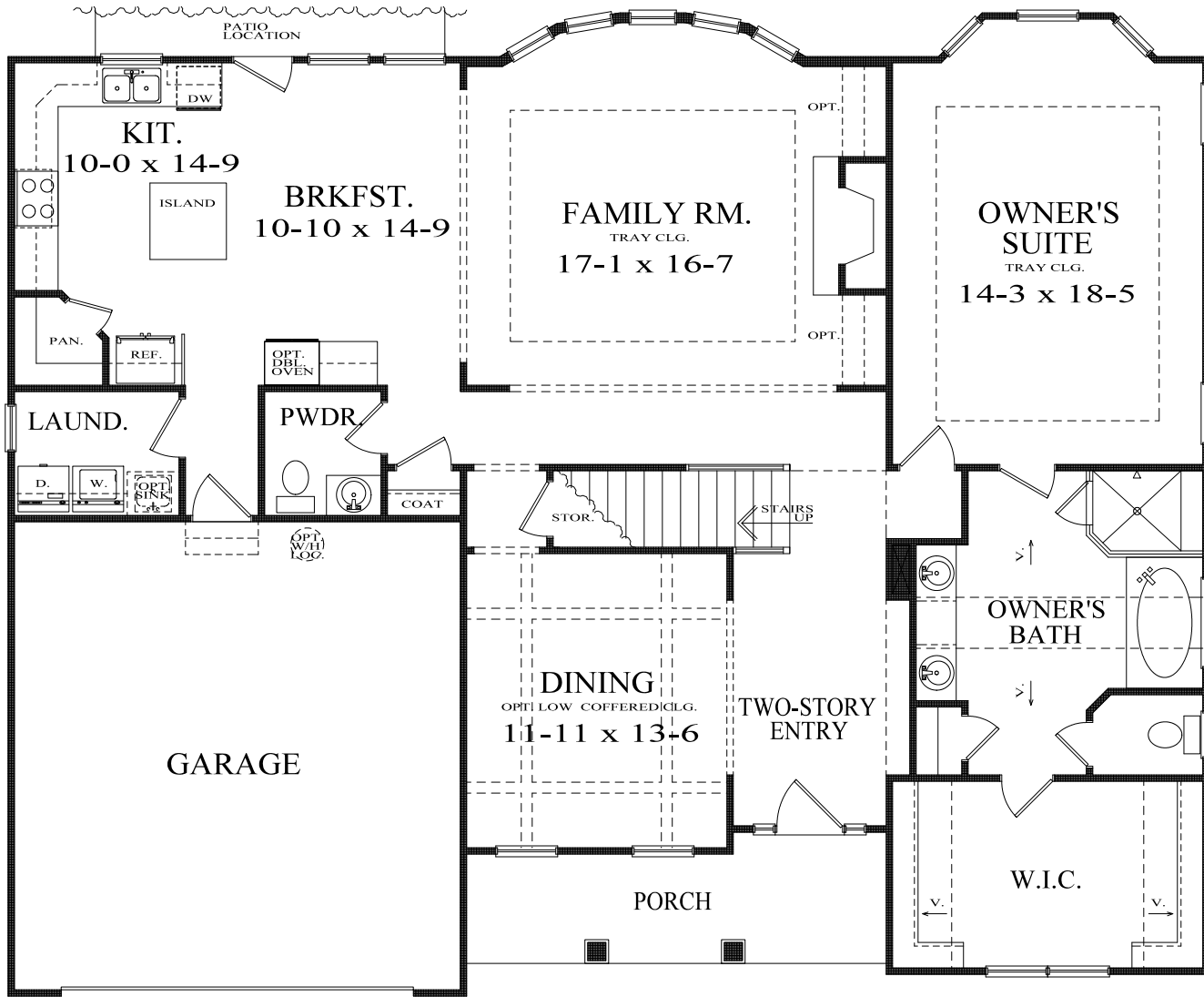
"Your Confidence Builder"

**TRILOGY PARK
CHATHAM-C Mod.**

082614

Plans and elevations shown are conceptual. Room sizes and or dimensions shown are approximate. Reference construction drawings for specific details. Consistency in product, materials, finishes, fixtures, pricing, and specifications is not guaranteed. Waterford Homes reserves the right of price, plan, and specification changes without prior notice or obligation. Designs depicted on this hand-out are the property of Waterford Homes and may not be used or reproduced without permission.

COPYRIGHT © 2014 WATERFORD HOMES, INC.



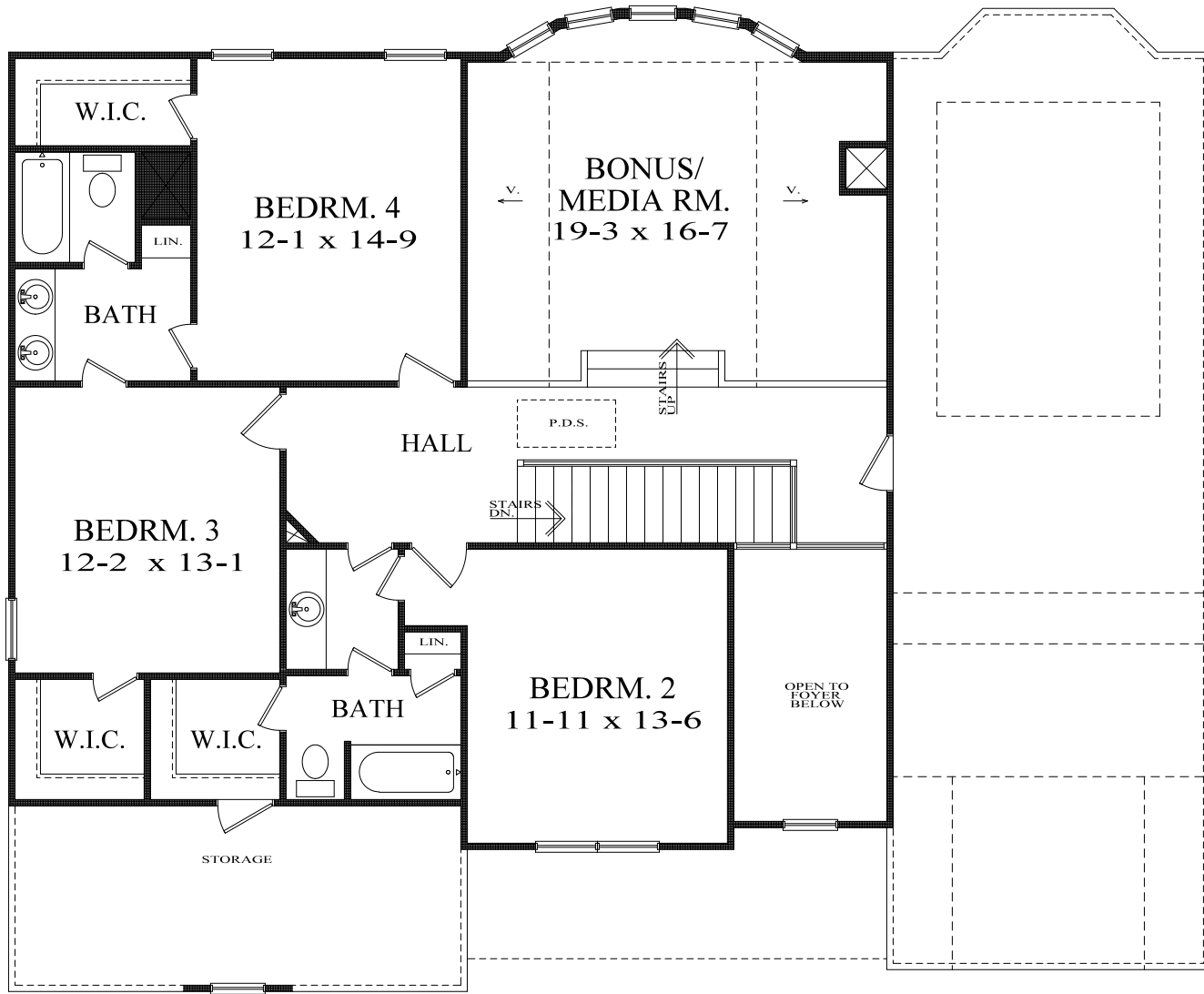
1st Flr.


WATERFORD HOMES
"Your Confidence Builder"

TRILOGY PARK
CHATHAM-C Mod.

Plans and elevations shown are conceptual. Room sizes and or dimensions shown are approximate. Reference construction drawings for specific details. Consistently improving our product, Waterford Homes reserves the right of prices, plan, and specification changes without prior notice or obligation. Designs depicted on this hand-out are the property of Waterford Homes and may not be used or reproduced without permission.

COPYRIGHT © 2014 WATERFORD HOMES, INC.



2nd Flr.


WATERFORD HOMES
"Your Confidence Builder"

TRILOGY PARK
CHATHAM-C Mod.